

110/O

110/F

STARTERFASSUNG STARTERHOLDERS

Technische Daten

Technical data

| | |
|--|----------------|
| - Nennstrom und Nennspannung - Rated current and voltage | 2A-250V |
| - Maximale Betriebstemperatur (IEC) - Maximum operating temperature (IEC) | |
| - Schutzgrad - Protection index | IP20 |
| - Überspannungskategorie - Impulse withstand category | III |

Merkmale

Characteristics

.../O = Messingkontakte

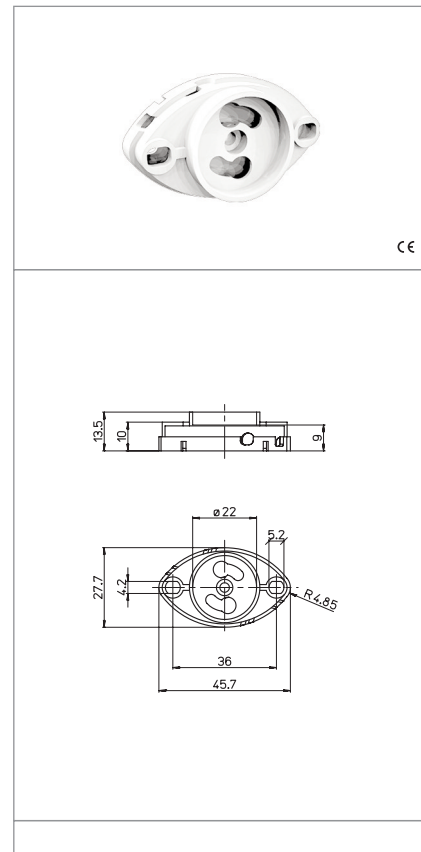
.../O= Brass contacts



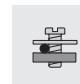

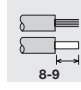
.../F= Zinkbeschichtete Kontakte aus Stahl

.../F= Zinc plated steel contacts

– Gehäuse aus PA

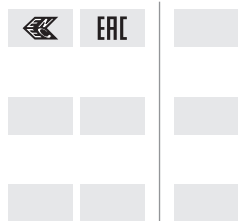
– Polyamide body



| | | | |
|---|--|--|---|
|  Schraubbefestigung screw fixing |  Materialdicke thickness |  Schraubkontakte mit Mutter terminals with screw and nut |  Flexibler Leitungsquerschnitt flexible conductor section |
|  mm ² 0,5-1,5 Feste Leitungsabschnitte rigid conductor section |  8-9 Abisolierung starre und flexible Leitungen rigid and flexible wires stripping | | |
| | | | |

Prüfzeichen

Quality marks



Europäische Richtlinien

European directives

gemäß "RoHS"

"RoHS" compliant

unterliegt nicht "WEEE"

Not subject to "WEEE"

Gewichte und Verpackung

Weights and packaging

| Artikel/Art. Produktinweise Product references | g Nettogewicht Net weight | n° pz pro Beutel per bag | n° pz pro Box per box | n° pz pro Karton per carton |
|--|---------------------------------|--------------------------------|-----------------------------|-----------------------------------|
| 110/O | | | | |
| 110/F | 7 | 1000 | 200 | |
| | | | | |
| | | | | |
| | | | | |
| | | | | |

Bemerkung

Notes